

Linear Position Technology

Draw Wire

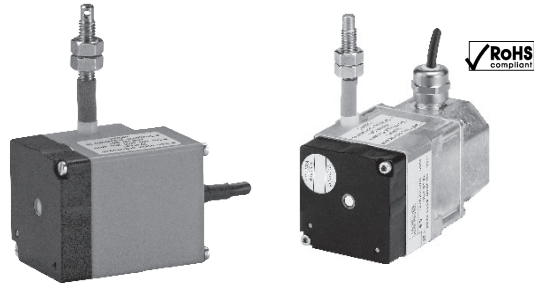
Mini Draw Wire Encoder DW55, Analog Output



Magnetic field proof

Rugged

- Reinforced plastic housing (1 m wire).
- Stainless steel cable
- Zinc die cast housing (2 m wire).



Versatile

- Simple processing of analog signal by means of a digital panel meter.
- Voltage or current output.
- Radial or axial cable exit.
- Analog outputs 4-20 mA, 0-10 V or resistance.

Compact

- Measuring length up to 2,000 mm.
- 40 x 40 x 58 mm housing (1 m wire).
- 40 x 40 x 72.3 mm housing (2 m wire).

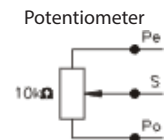
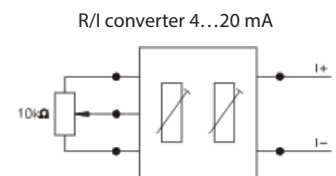
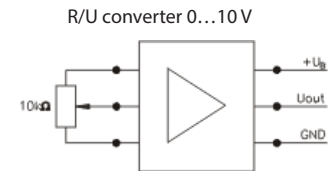
Mechanical Characteristics of the Draw-Wire Encoder:

Measuring range:	up to 2,000 mm		
Absolute accuracy:	±0.35% for the whole measuring range		
Repetition accuracy:	±0.15 mm per direction of travel		
Resolution:	analog output signal		
	1 m ⇒ 0-10 V	2 m ⇒ 0-10 V	
	1 m ⇒ 4-20 mA	2 m ⇒ 4-20 mA	
	1 m ⇒ 0-10 kΩ	2 m ⇒ 0-10 kΩ	
Traversing speed:	max. 2.62 ft/s (800 mm/s)		
Required force:	approx. 2.25 lbs (10 N) (on wire)		
Material:	Housing: reinforced plastic (1 m), Zinc die cast (2 m) Wire: stainless steel Ø 0.45 mm, plastic coated		
Weight:	approx. 0.463 lbs (0.210 kg) for 1 m wire; 0.705 lbs (0.320 kg) for 2 m wire		

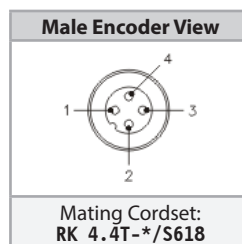
Electrical Characteristics:

Analog output [Key Code]:	0-10 V [8C]	4-20 mA [7E]	Potentiometer 10 kΩ [PB]
Supply voltage:	15-28 VDC	15-28 VDC	-
Temperature range:	32 to 122 °F (0 to +50 °C)	32 to 122 °F (0 to +50 °C)	32 to 122 °F (0 to +50 °C)
Load:	max 500 Ω	max 500 Ω	-

Electrical Connections:



Wiring Diagram:



* Length in meters.

Standard Wiring:

Color	WH	BN	GN
Pin M12	2	1	3/BU
4-20 mA	*-I	+I	N/C
0-10 VDC	GND	15-28 V	V _{out}
Pot. 10 kΩ	Pe, end position	Po, start position	Wiper contact

* Loop powered

Mini Draw Wire Encoder DW55, Analog Output

Part Number Key: DW55

A	B		C		D		E
DW	1000	-	55	-	7F	-	CA

A	Type
DW	Draw Wire

B	Measuring Range
1000	1 m Steel Wire, IP50
2000	2 m Steel Wire, IP65

C	Housing
55	40 mm

D	Voltage Supply and Output Type
7F	15-28 VDC, 4-20 mA
8D	15-28 VDC, 0-10 V
PB	40 VDC max, 10 kΩ, Potentiometer

E	Type of Connection
H1141	Radial 4-pin M12 Eurofast Connector ¹⁾
C	Radial Cable (2 m PVC) ¹⁾
CA	Axial Cable (2 m PVC) ²⁾

¹⁾ Only available with measuring range '2000'
²⁾ Only available with measuring range '1000'

Accessories:

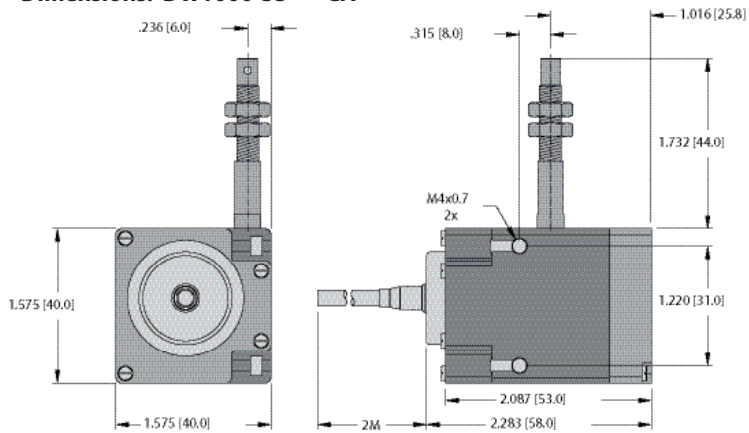
- See page H1, Connectivity, for cables and connectors

Linear Position Technology

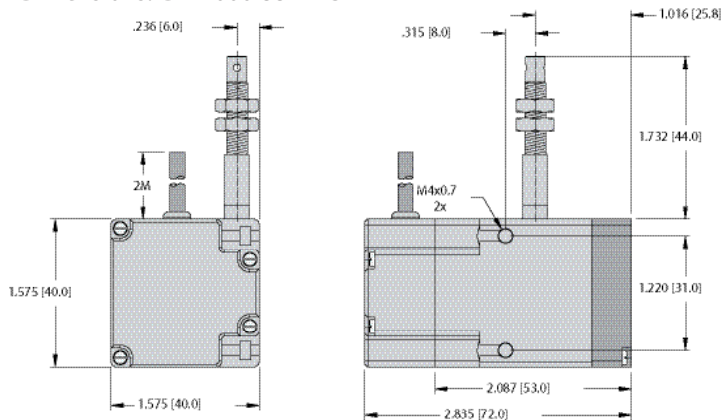
Draw Wire

Mini Draw Wire Encoder DW55, Analog Output

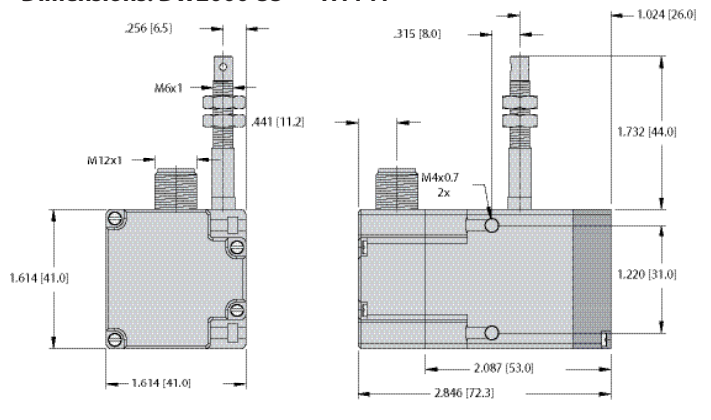
Dimensions: DW1000-55--CA**



Dimensions: DW2000-55--C**



Dimensions: DW2000-55--H1141**



Draw Wire Encoder Accessories

Part Number:
RA-DW-SEC-2M

Description:
2 m steel wire extension

Part Number:
RA-DW-SEC-5M

Description:
5 m steel wire extension

Part Number:
RA-DW-PEC-2M

Description:
2 m para wire extension

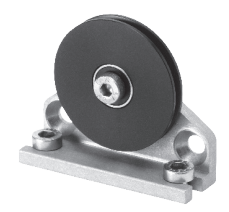
Part Number:
RA-DW-SEC-10M

Description:
10 m steel wire extension



Part Number:
RDR-1

Description:
Guide pulley



Accessories:

- See page H1, Connectivity, for cables and connectors